

ACCESS CODES SETTING by SMS

The **W-LOCK** is the CodeLock GSM remote control unit with illuminated keypad for gates opening. To open the doors you can type your unique 4 digits access code into the CodeLock keypad or you can dial the mobile number of the **W-LOCK** device free of charge (Caller ID). When the correct access code is entered or preset Caller ID is recognized the **W-LOCK** device opens the gates.

Changing of access entry codes, setting the phone numbers and other parameters can be set remotely with Web server, by sending SMS message to the device or with Smartphone Apps.

Typical use of the **W-LOCK**: rental apartments, holiday houses, restricted access areas, storages, laboratories, etc.



Features

- Remotely access codes changing
- **Up to 1000 access codes + 50 temporary access codes**
- Manage through an authorized user(s)
- **Up to 500 users can open the entrance with a free call - Caller ID**
- Setup of all codes and other parameters via PC over USB cable, remotely from PC via Web Access, by SMS or with SmartPhone App
- NEW F-OTA function - Upgrade FW of the device Over The Air



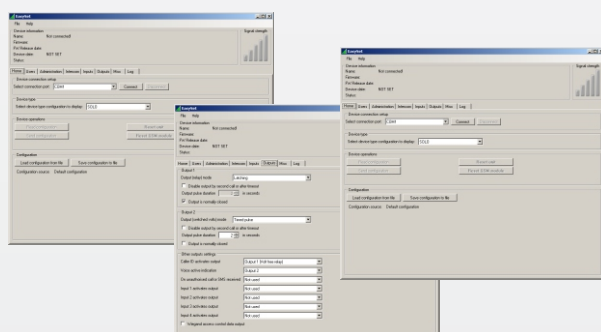
Technical Specifications

Power Supply	12,0V - 20,0V AC or 12,0V - 24,0V DC
Current consumption - transmitting mode	300mA
Current consumption - idle mode	180mA (Illuminated keypad)
4 (2G) or 5 (3G) band GSM module	850/900/1800/1900 MHz
PCB dimensions	82 × 75 mm
Unit dimensions	156 × 116 × 61 mm
External Patch Antenna SMA	1
Weight	1125 g

Applications

- Restricted access areas
- Barriers, Shutters
- Entry and Garage doors
- Small Hotels and Hostels
- Rental apartments
- Storages, Laboratories, etc.

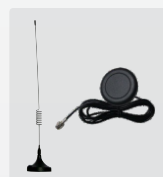
EASYSET - Programming SW for PC and Smartphone app



Accessories



Ext. power supply
100 - 230V AC/
15,0V DC



Outdoor antennas
(antivandal round,
patch, magnetic)



Also available for
flush mounting

Mars Commerce

Mars Commerce d.o.o.
Ulica Mirka Vadnova 19, SI 4000 Kranj, Slovenija
ph: + 386 4 280 74 00, fax: + 386 4 234 08 81
www.mars-commerce.com
email: sales@mars-commerce.com